

KING L



8511



2912



2012



2514



2017



8508



1010



1530



1930



1030



1041



1025



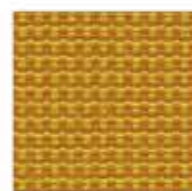
3090



3520



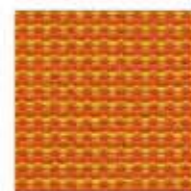
3020



3920



4630



4930



4030



4004



4027



4527



4528



4517



4017



5004



5015



9506



6017



6580



6079



6016



6517



6579



6080



6617



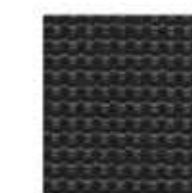
8033



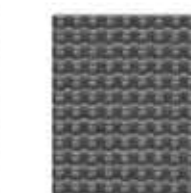
8534



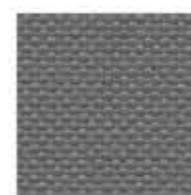
8010



8510



8507



8007



8514



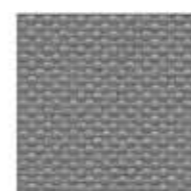
8004



8504



8048



8014



7034



9704



9703



7041



7036



7020



7920



7520



7019



7536



7936



9706



7519



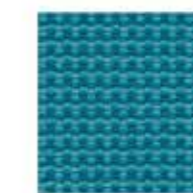
7026



6031



6531



6937



6037



6007



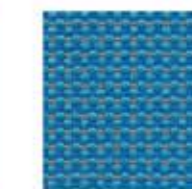
6572



6071



6571



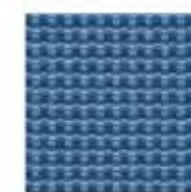
6507



6070



6516



6943



6043



6543



6056

FIDIVI*

TESSITURA VERGNANO

CARATTERISTICHE PRINCIPALI - PRINCIPAL CHARACTERISTICS
CARACTERISTIQUES PRINCIPALES - HAUPT EIGENSCHAFTEN

Date 26/10/2015
Edition 03

KING L

Caratteristica Characteristic Caractéristique Charakterdarsteller	Norma Norm Norme Norm	Tolleranza Tolerance Tolérance Toleranz	Dichiarato Declared Déclaré Deklariert
Peso (g/ml) – Weight (g/lm) Poids (g/ml) - Gewicht (g/lm)	EN 12127	± 5 %	365
Peso (g/m ²) - Weight (g/m ²) Poids (g/m ²) - Gewicht (g/m ²)	EN 12127	± 5 %	260
Altezza (cm) - Width (cm) Largeur (cm) - Breite (cm)	-----	± 2 %	140
Resistenza all'abrasione (cicli) Abrasion resistance (rubs) Résistance à l'abrasion (tours) Scheuerfestigkeit (Scheuertouren)	ISO 12947-2 (Martindale)	± 10 %	70000
Solidità del colore alla luce (scala dei blu) Light fastness (blue scale) Solidité à la lumière (échelle des bleu) Lichtechtheit (Blaumaßstabe)	ISO 105-B02 (Xenotest)	da 5 a 8	6
Solidità del colore allo sfregamento (scala dei grigi) Fastness to rubbing (grey scale) Solidité au frottement (échelle des gris) Reibechtheit (Graumaßstabe)	ISO 105-X12 (Crockmeter)	da 4 a 5	4/5
Pilling (2000 cicli) - Pilling (2000 rubs) Pilling (2000 tours) - Pilling (2000 scheuertouren)	ISO 12945-2	da 4 a 5	5
Composizione Composition Composition Zusammensetzung	100% POLIESTERE TREVIRA CS 100% POLYESTER TREVIRA CS 100% POLYESTER TREVIRA CS 100% POLYESTER TREVIRA CS		

Leggere differenze di colore tra un lotto e l'altro sono da considerarsi normali
 Slight colour differences between one lot and another have to be considered within commercial tolerance
 Légères différences de couleur entre un lot et l'autre doivent être considérés comme étant normales
 Leichte Farbunterschiede sind zwischen zwei Partien als normal zu betrachten

Reazione al fuoco – Flammability - Classement au feu – Feuersicherung

UNI 9174 - 8456 Class C1
 UNI 9175 Class 1 IM
 DIN 4102 Class B1
 NF 92501-7 Class M1
 NF D 60013 Class AM18
 EN 1021-1 & 2
 BS Crib 5
 BS 7176 Class Medium Hazard
 EN 13773 Class 1
 OENORM 3800-1 Class B1,Q1,TR1
 California TB117
 USA NFPA 701
 USA NFPA 260
 IMO Part 8 Upholstery

Altri test fuoco possono essere superati, il superamento di alcuni test fuoco può dipendere dalla schiuma utilizzata
 Will also pass other flammability standards. Flame retardant performance is dependent upon the foam used
 Autres tests feu peuvent être passés. La performance au feu dépend de la mousse utilisée
 Wird auch andere Brandschutzstandards erfüllen. Die flammhemmende Leistung ist anhängig von dem verwendeten Schaum

Manutenzione e lavaggio – Cleaning and washing – Nettoyage et lavage – Reinigung und waschen

